



ADVANCED FORMLINERS, LLC
www.advancedformliners.com

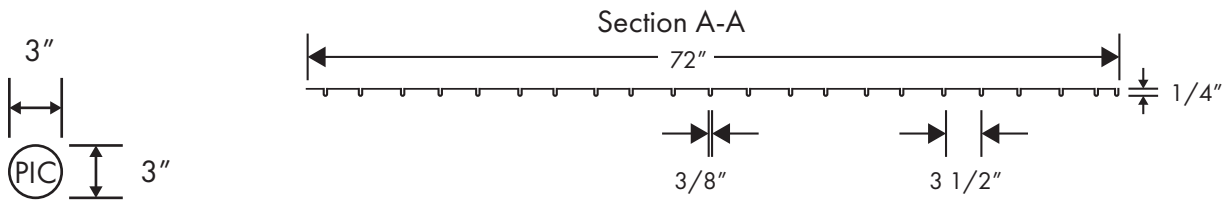
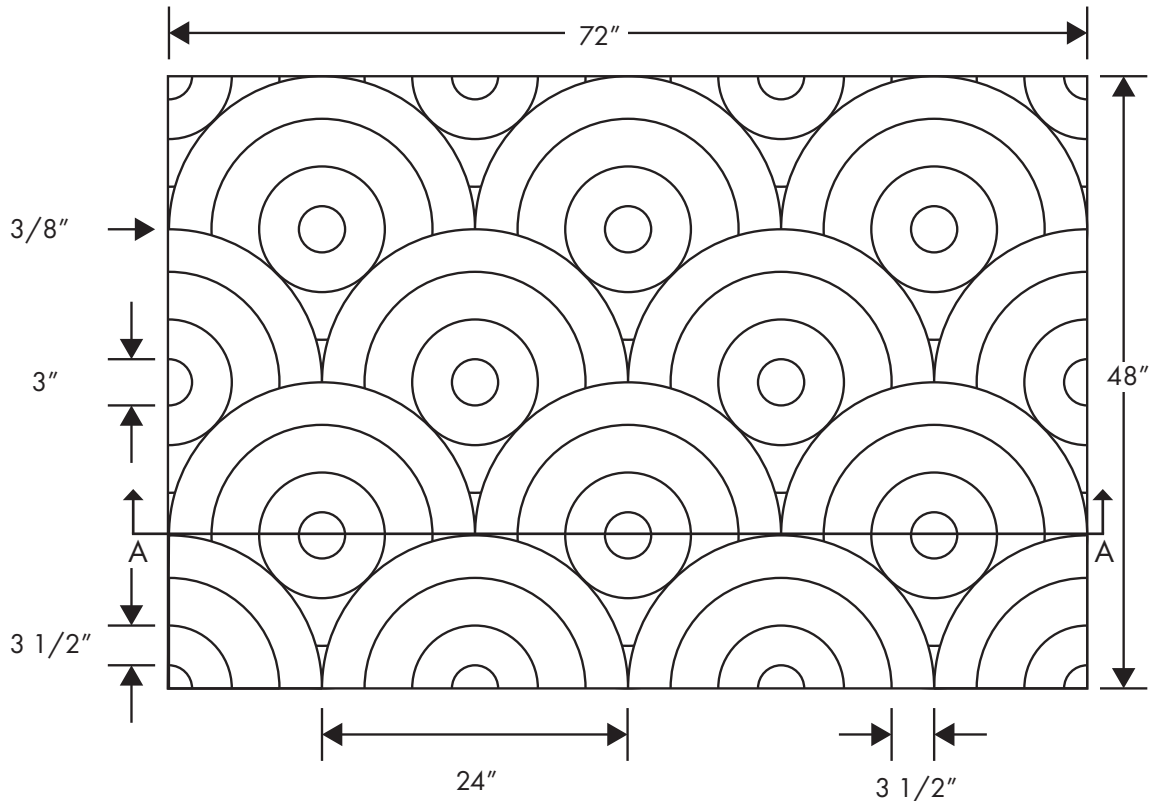
406 Overlapping Circles

SOLOCAST SEAMLESS FORMLINER

Patent No. US 8,852,724 B2

| | |
|----------------------|---------------|
| Sheet size: | 72" W X 48" H |
| Square ft per Sheet: | 24 |
| Joint width: | 3/8" |
| Joint height: | 1/4" |

Solocast Seamless



----- Match
Patented Insert Cover (PICs):
3" X 3"

Formliner Size:
72" X 48"

Maximum Depth:
1/4"

ADVANCED FORMLINERS, LLC
www.advancedformliners.com

Bob Calmes, National Sales Manager
(920) 819-9851 | bob@advancedformliners.com



ADVANCED FORMLINERS, LLC
www.advancedformliners.com

406 Overlapping Circles

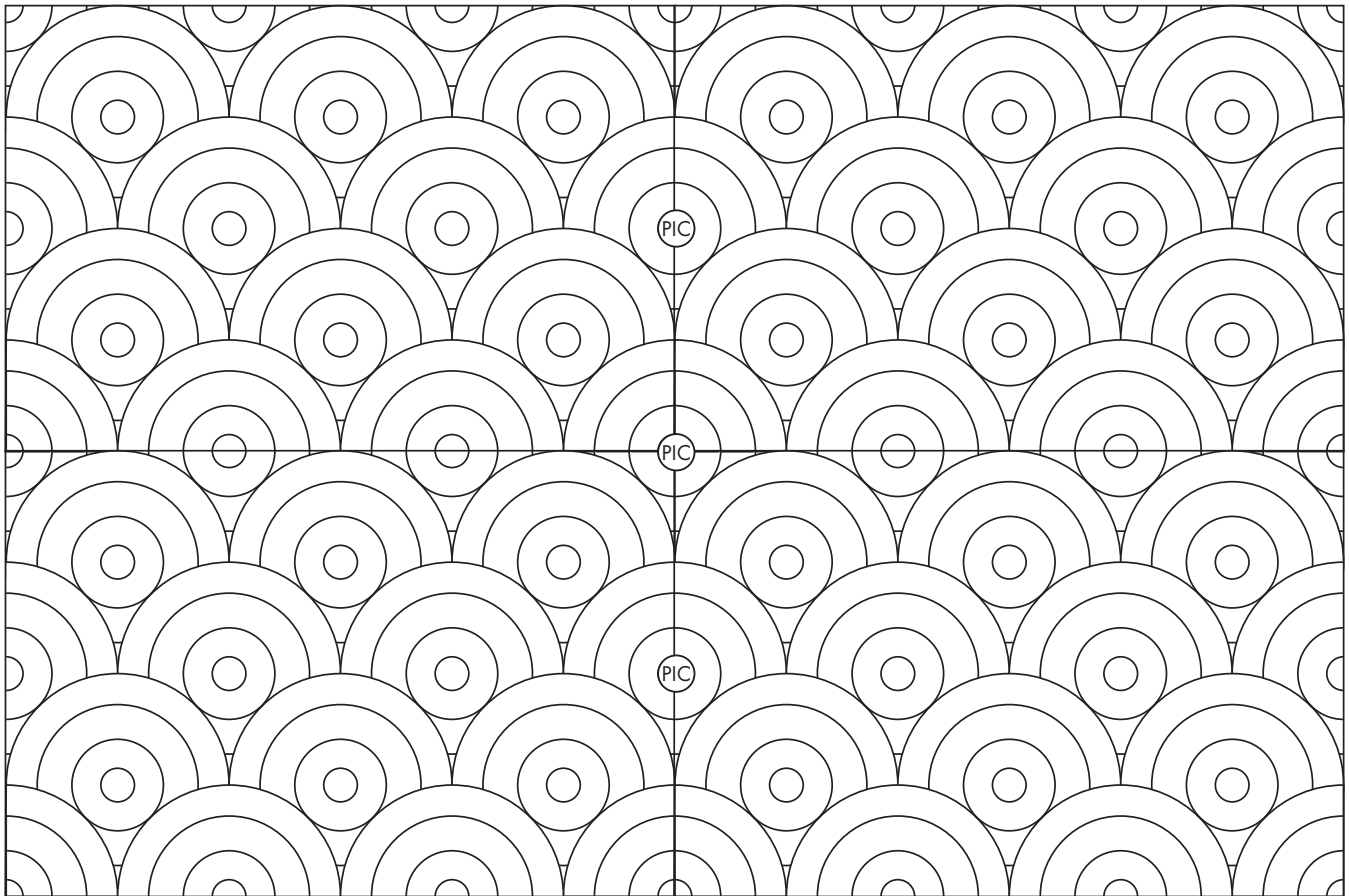
SOLOCAST SEAMLESS FORMLINER

Patent No. US 8,852,724 B2

| | |
|----------------------|---------------|
| Sheet size: | 72" W X 48" H |
| Square ft per Sheet: | 24 |
| Joint width: | 3/8" |
| Joint height: | 1/4" |

Solocast Seamless

1. Formliners placed together with PICs



ADVANCED FORMLINERS, LLC
www.advancedformliners.com

Bob Calmes, National Sales Manager
(920) 819-9851 | bob@advancedformliners.com



ADVANCED FORMLINERS, LLC
www.advancedformliners.com

406 Overlapping Circles

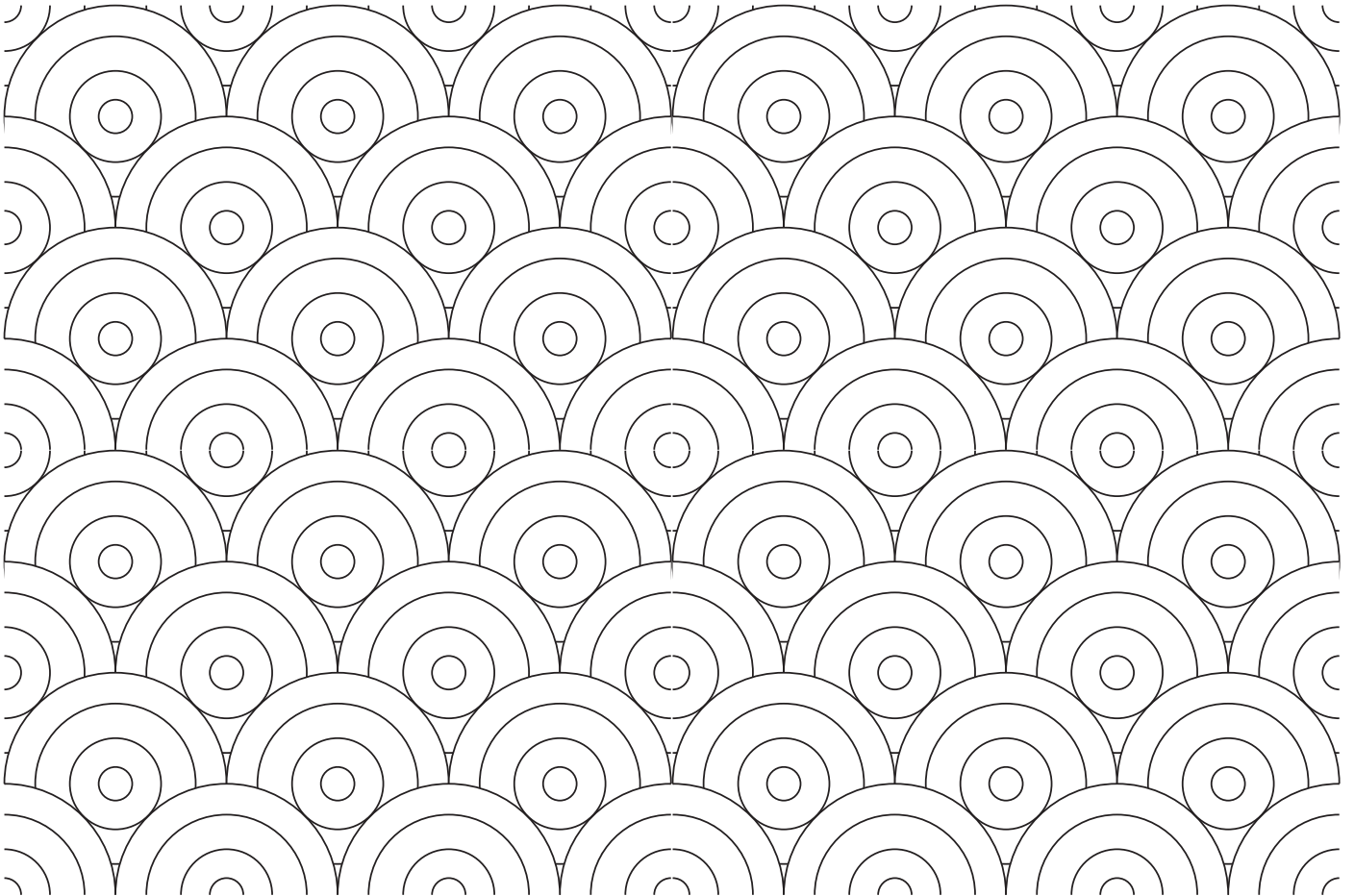
SOLOCAST SEAMLESS FORMLINER

Patent No. US 8,852,724 B2

| | |
|----------------------|--------------|
| Sheet size: | 72"W X 48" H |
| Square ft per Sheet: | 24 |
| Joint width: | 3/8" |
| Joint height: | 1/4" |

Solocast Seamless

2. Completed Wall



ADVANCED FORMLINERS, LLC
www.advancedformliners.com

Bob Calmes, National Sales Manager
(920) 819-9851 | bob@advancedformliners.com



ADVANCED FORMLINERS, LLC
www.advancedformliners.com

406 Overlapping Circles

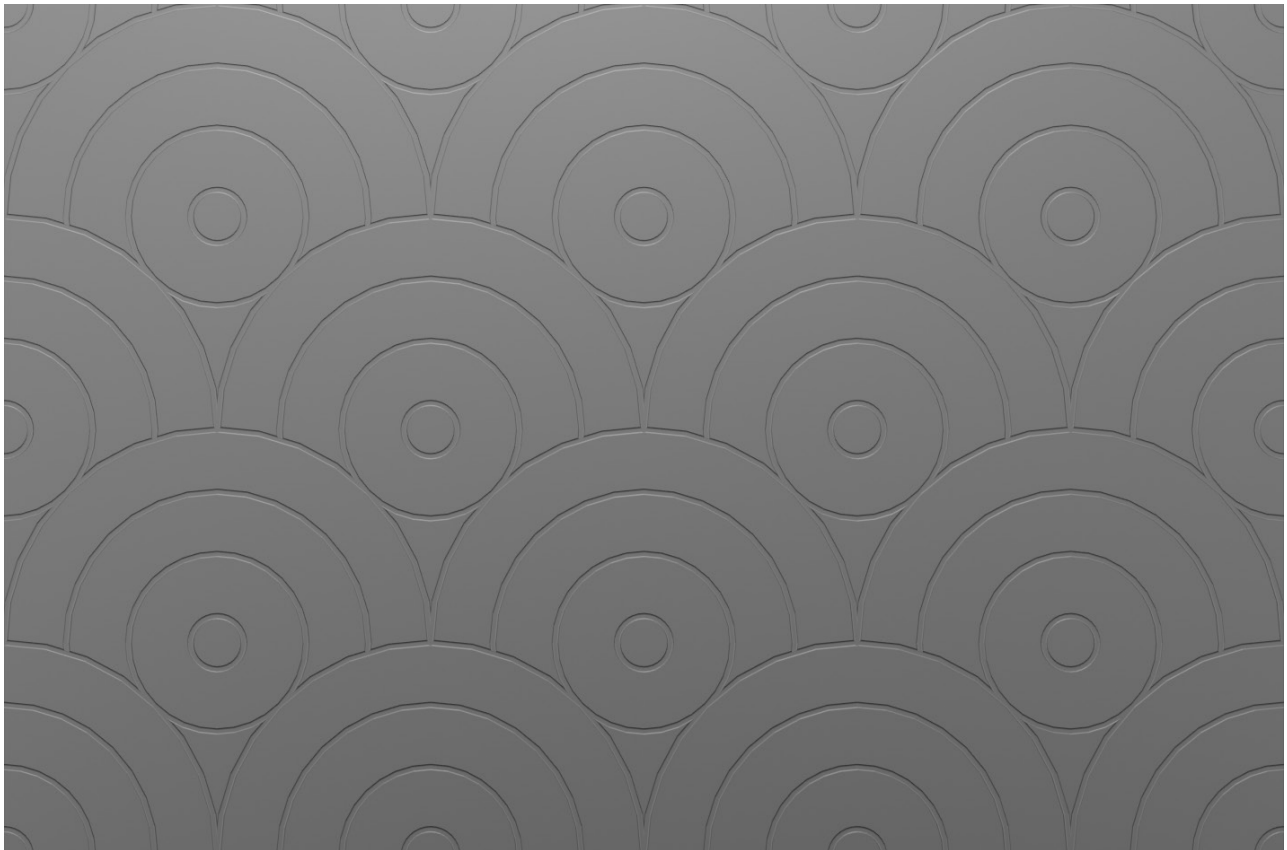
SOLOCAST SEAMLESS FORMLINER

Patent No. US 8,852,724 B2

| | |
|----------------------|--------------|
| Sheet size: | 72"W X 48" H |
| Square ft per Sheet: | 24 |
| Joint width: | 3/8" |
| Joint height: | 1/4" |

Solocast Seamless

3D Render of wall



ADVANCED FORMLINERS, LLC
www.advancedformliners.com

Bob Calmes, National Sales Manager
(920) 819-9851 | bob@advancedformliners.com



ADVANCED FORMLINERS, LLC
www.advancedformliners.com

406 Overlapping Circles

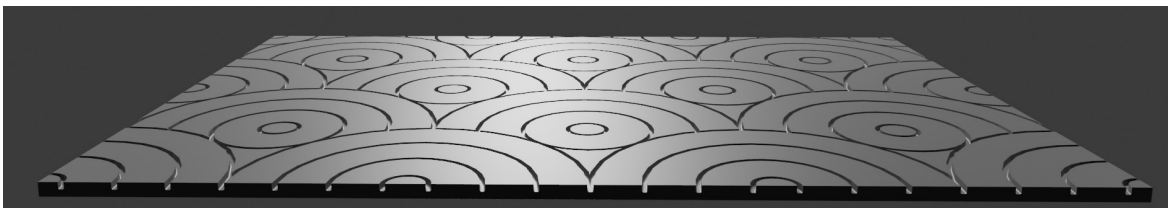
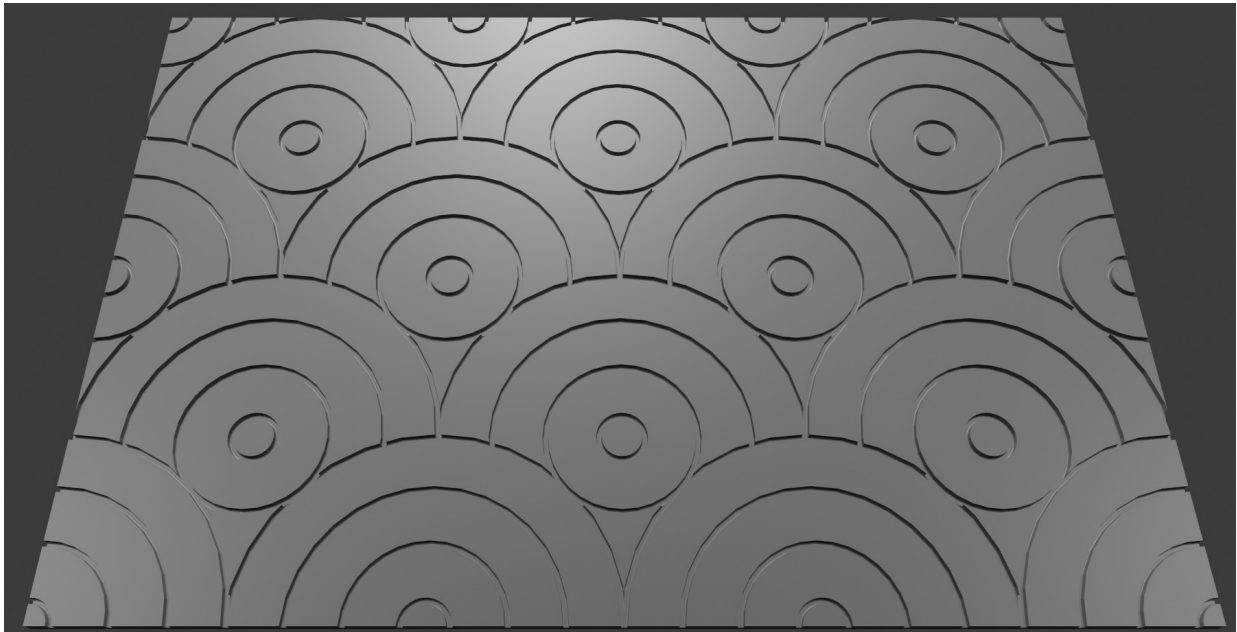
SOLOCAST SEAMLESS FORMLINER

Patent No. US 8,852,724 B2

| | |
|----------------------|--------------|
| Sheet size: | 72"W X 48" H |
| Square ft per Sheet: | 24 |
| Joint width: | 3/8" |
| Joint height: | 1/4" |

Solocast Seamless

3D Render of wall



ADVANCED FORMLINERS, LLC
www.advancedformliners.com

Bob Calmes, National Sales Manager
(920) 819-9851 | bob@advancedformliners.com