



# 205 A XXXL HALF BOND

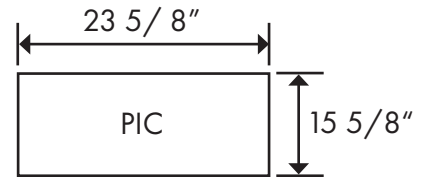
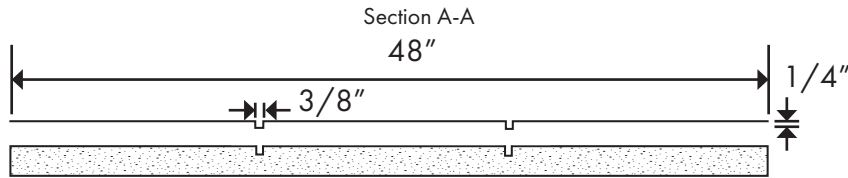
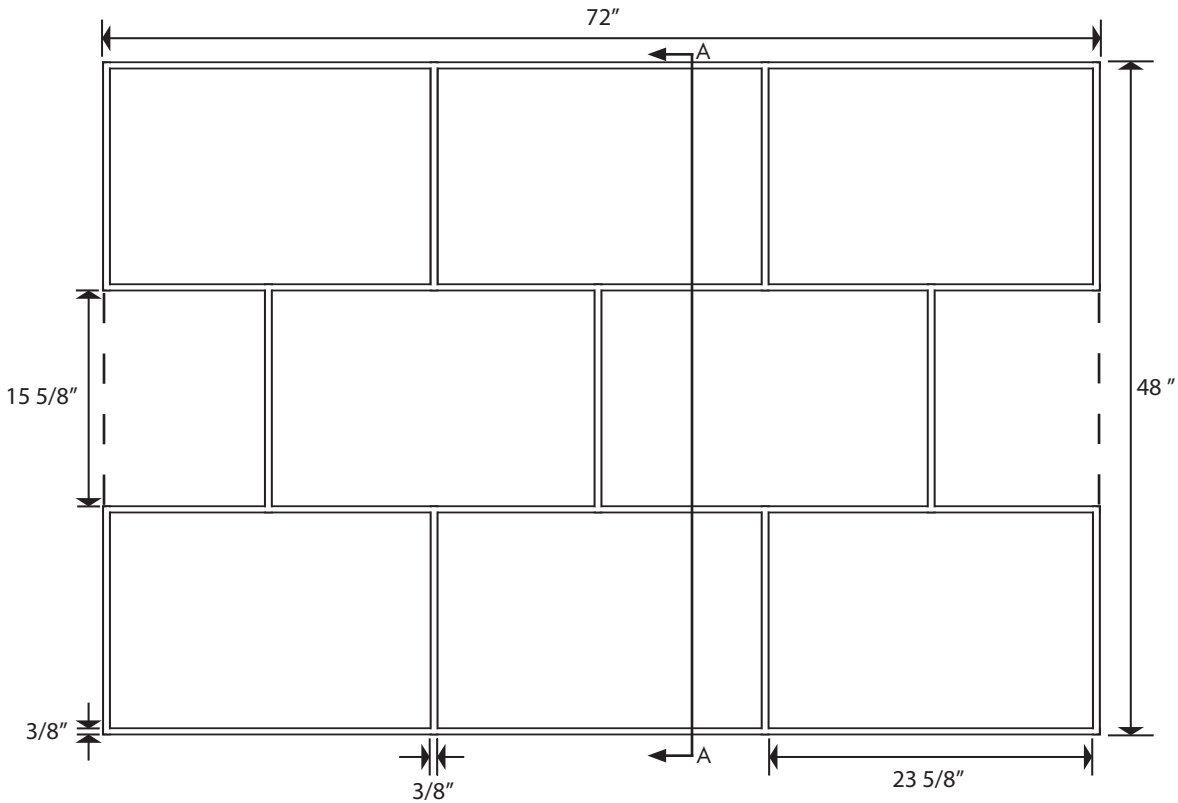
SOLOCAST SEAMLESS FORMLINER

Patent No. US 8,852,724 B2

ADVANCED FORMLINERS, LLC  
www.advancedformliners.com

Sheet size:	72" WX 48"
Square ft per Sheet:	24
Vertical joint width:	3/8"
Horizontal joint width:	3/8"
Joint height:	1/4"

## Solocast Seamless



----- Match  
 Patented Insert Cover (PICs):  
 23 5/8" X 15 5/8"

Brick Size:  
 23 5/8" X 15 5/8"

Formliner Size:  
 72" X 48"

Maximum Depth:  
 1/4"

ADVANCED FORMLINERS, LLC  
 www.advancedformliners.com

Bob Calmes, National Sales Manager  
 (920) 819-9851 | bob@advancedformliners.com



# 205 B XXXL HALF BOND

SOLOCAST SEAMLESS FORMLINER

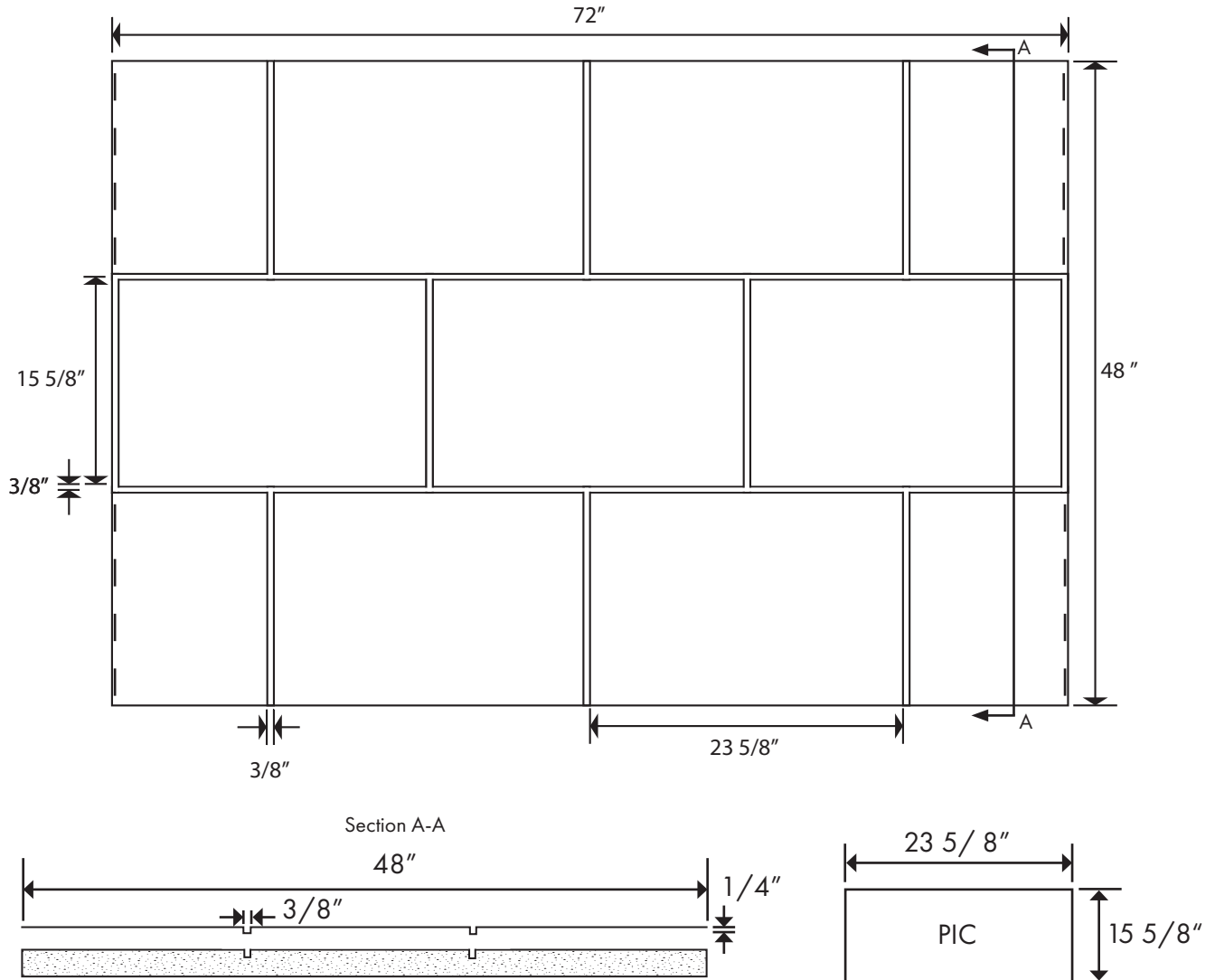
Patent No. US 8,852,724 B2

ADVANCED FORMLINERS, LLC

www.advancedformliners.com

Sheet size:	72" X 48"
Square ft per Sheet:	24
Vertical joint width:	3/8"
Horizontal joint width:	3/8"
Joint height:	1/4"

## Solocast Seamless



----- Match  
 Patented Insert Cover (PICs):  
 23 5/8" X 15 5/8"

Brick Size:  
 23 5/8" X 15 5/8"

Formliner Size:  
 72" X 48"

Maximum Depth:  
 1/4"

ADVANCED FORMLINERS, LLC  
 www.advancedformliners.com

Bob Calmes, National Sales Manager  
 (920) 819-9851 | bob@advancedformliners.com



**ADVANCED FORMLINERS, LLC**  
www.advancedformliners.com

## 205 A XXXL HALF BOND

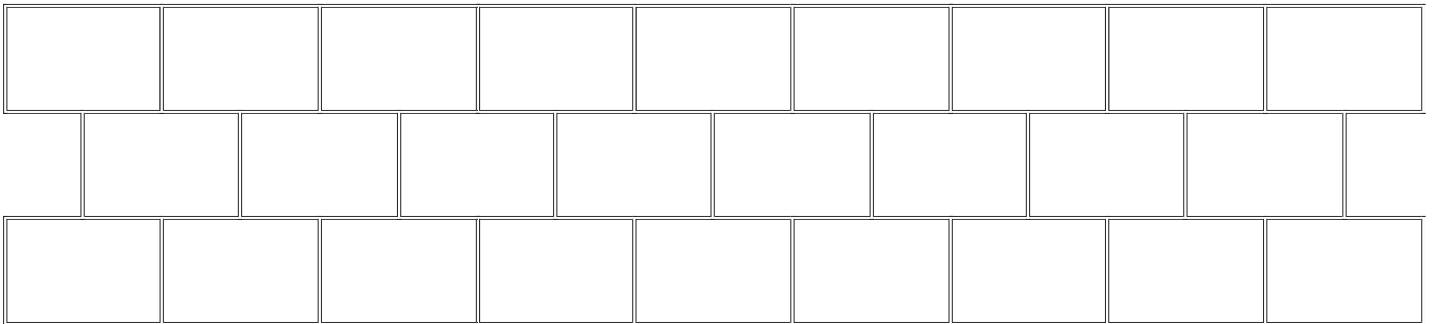
SOLOCAST SEAMLESS FORMLINER

Patent No. US 8,852,724 B2

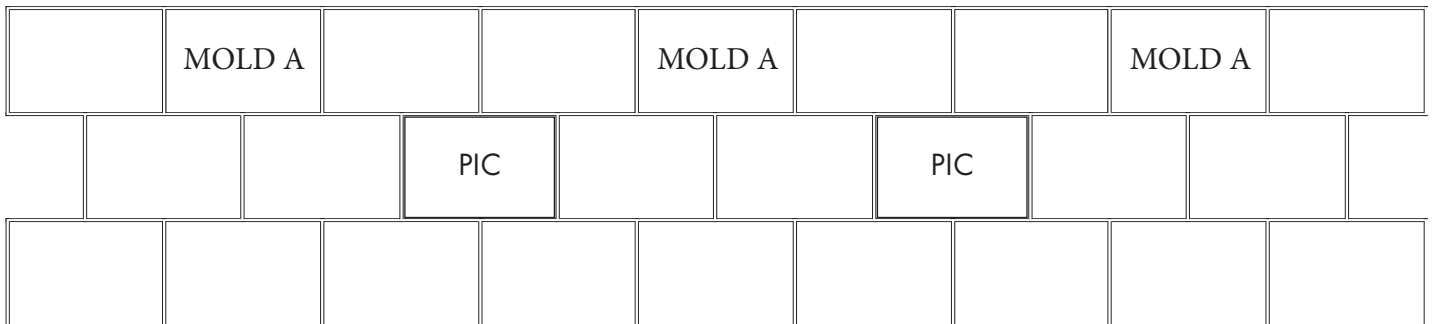
Sheet size:	72" X 48"
Square ft per Sheet:	24
Vertical joint width:	3/8"
Horizontal joint width:	3/8"
Joint height:	1/4"

# Solocast Seamless

### 1. Formliners placed together



### 2. PICs placed on formliners to create seamless pattern





**ADVANCED FORMLINERS, LLC**  
www.advancedformliners.com

# 205 B XXXL HALF BOND

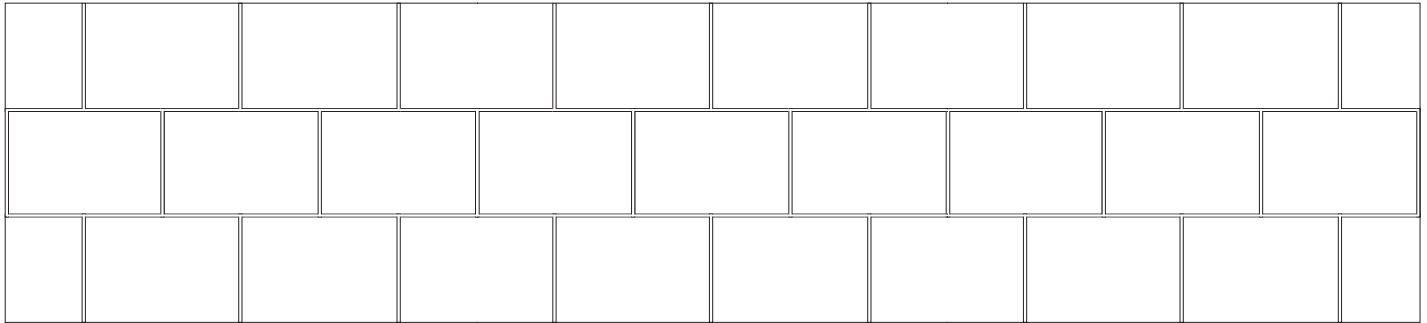
SOLOCAST SEAMLESS FORMLINER

Patent No. US 8,852,724 B2

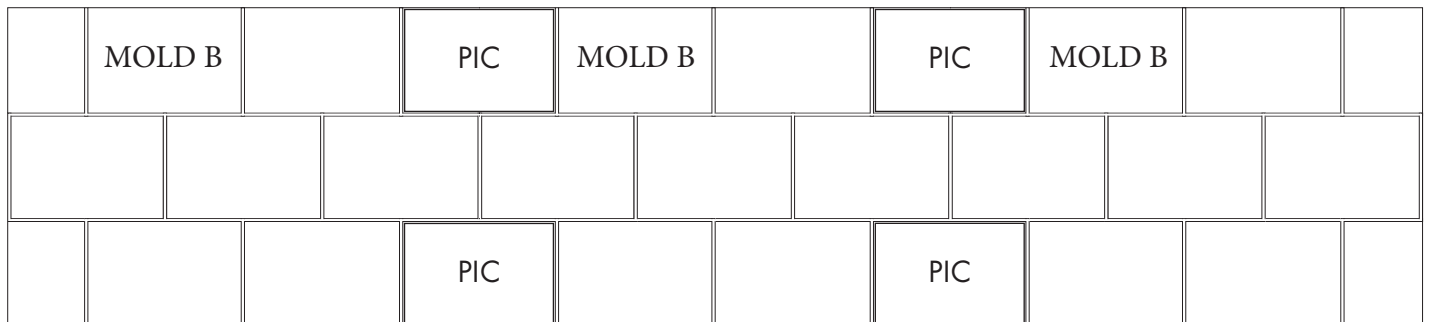
Sheet size: 72" X 48"  
 Square ft per Sheet: 24  
 Vertical joint width: 3/8"  
 Horizontal joint width: 3/8"  
 Joint height: 1/4"

## Solocast Seamless

### 1. Formliners placed together



### 2. PICs placed on formliners to create seamless pattern





**ADVANCED FORMLINERS, LLC**  
www.advancedformliners.com

# 205 A-B XXXL HALF BOND

SOLOCAST SEAMLESS FORMLINER  
Patent No. US 8,852,724 B2

Sheet size:	72" X 48"
Square ft per Sheet:	24
Vertical joint width:	3/8"
Horizontal joint width:	3/8"
Joint height:	1/4"

## Solocast Seamless

### 3. Completed wall

